



National Science Foundation

Anne Sylvester

Karen Cone

Cliff Weil

Maize Genetics Conference, March 2018



National Science Foundation



NSF Strategic Plan for Fiscal Years 2018 - 2022

“To promote the progress of science; to advance the national health, prosperity, and welfare; to secure the national defense...”



NSF 10 Big Ideas: *Research & Process*

NSF's Ten Big Ideas

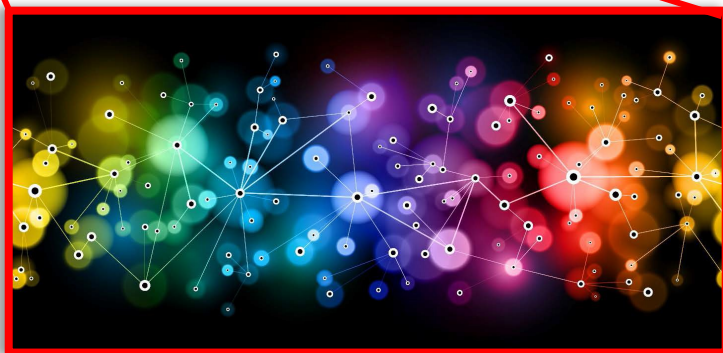
RESEARCH IDEAS			
 HARNESSING THE DATA REVOLUTION FUNDAMENTAL RESEARCH, MACHINE LEARNING, DATA SCIENCE, CYBERINFRASTRUCTURE, MODELING, DATA MINING, INTEROPERABILITY, HUMAN-DATA INTERFACE	Work at the Human-Technology Frontier: Shaping the Future 	Windows on the Universe: The Era of Multi-messenger Astrophysics 	The Quantum Leap: Leading the Next Quantum Revolution
Harnessing Data for 21st Century Science and Engineering 	Navigating the New Arctic 	Understanding the Rules of Life: Predicting Phenotype 	
PROCESS IDEAS			
Mid-scale Research Infrastructure 	NSF 2050 		
Growing Convergent Research at NSF 	NSF INCLUDES: Enhancing STEM through Diversity and Inclusion 		



Understanding the Rules of Life



Harnessing the Data Revolution



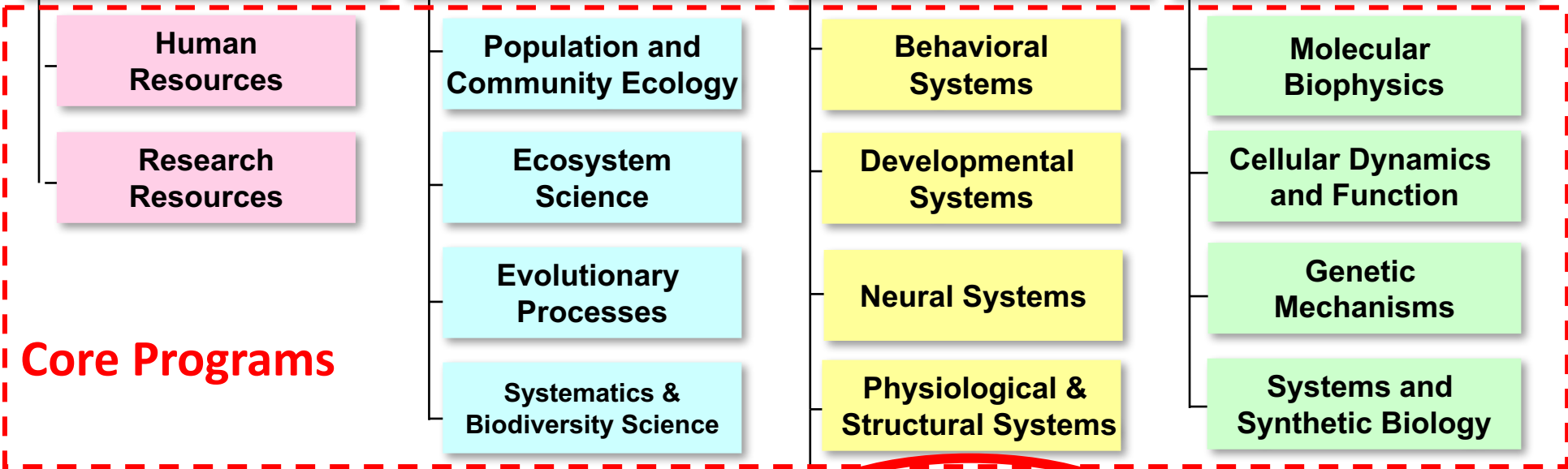
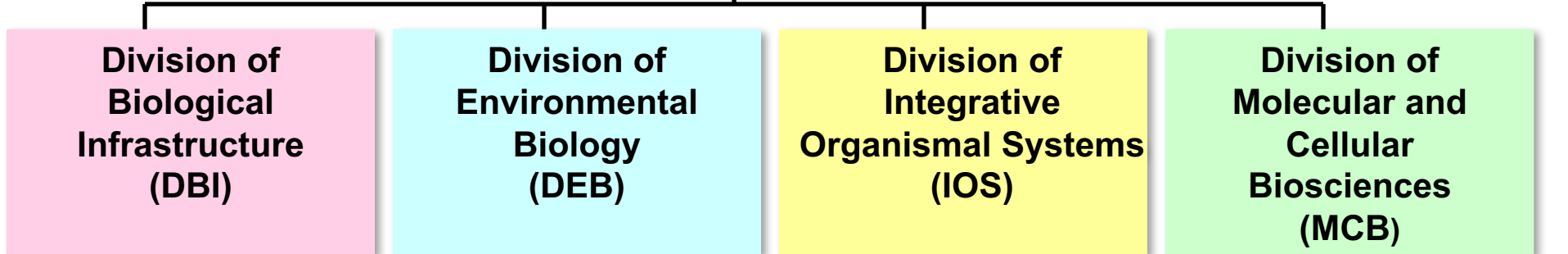
Convergent Research



Joanne Tornow
Acting Assistant Director

Directorate for Biological Sciences (BIO)

Emerging Frontiers (EF)



Plant Genome Research Program



Types of Funding Opportunities

Solicitations

- eg. [NSF 16-614](#): Plant Genome Research Program; No deadlines

Dear Colleague Letters, Workshops & EAGERS

- eg. [NSF 18-039](#): Breakthrough Enabling Technologies in Crop Research
- eg. [NSF 18-031](#): Rules of Life EAGERS

Dear Colleague Letter: Seeking Community Input for Topic Ideas to Accelerate Research Through International Network-to-Network Collaboration

[EAGERS](#) support exploratory work in early stages on untested, but potentially transformative, research ideas or approaches.

Cross-Cutting & Interagency Programs

- eg. [NSF 17-551](#): Plant Biotic Interactions NSF +USDA-NIFA (under revision)
- eg. [NSF 17-537](#): Faculty early career development program

Public / Private / Non-Profit Partnerships

- eg. [GOALI](#): Grant Opportunities for Academic Liaison with Industry





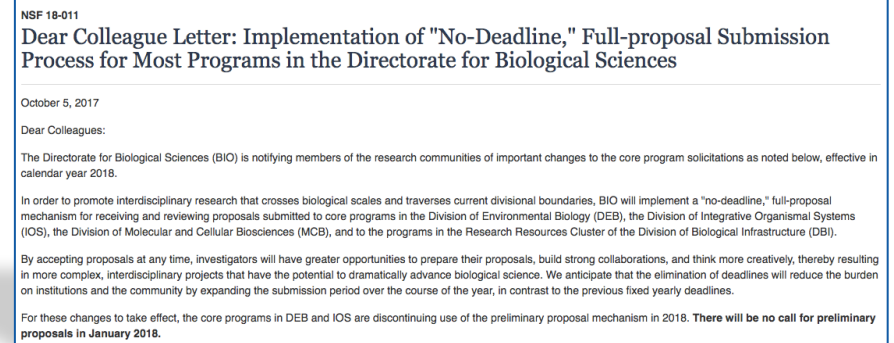
BIO Directorate – “No Deadline” for Most

- **Transition to “NO DEADLINE” for most programs**
- [NSF 18-011](#) Dear Colleague Letter: Implementation of "No-Deadline," Full-proposal Submission Process for Most Programs in the Directorate for Biological Sciences
- **New solicitation for each division released this summer**

No Deadline =

Proposals accepted any day, any time

Same review process






Plant Genome Research Program

- **For genome-scale research in economically important plants**
- **Four focus areas *currently***
 1. RESEARCH: Basic research and/or tool development
 2. TRANSFORM Challenge grants: To improve plant transformation
 3. MINE Challenge grants: To mine and use existing datasets
 4. ECA or MCA: Early Career or Mid-Career awards
- **Continues as “No Deadline”**

[Solicitation at NSF 16-614](#) and [FAQs at NSF 17-017](#)

Contact: dbipgr@nsf.gov

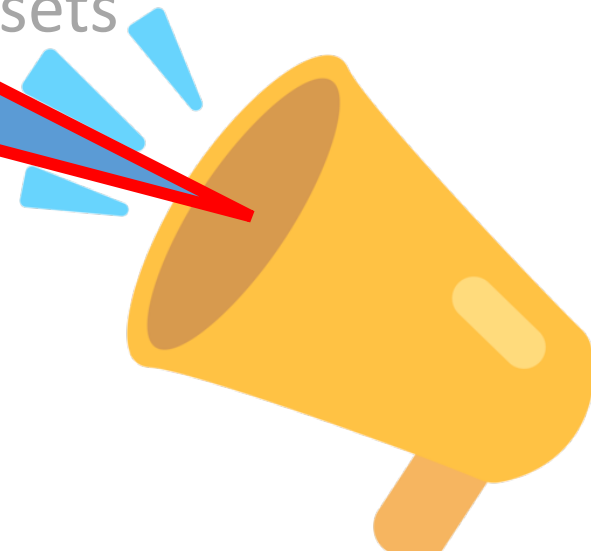
Plant Genome Research Program (PGRP)	
PROGRAM SOLICITATION NSF 16-614	
REPLACES DOCUMENT(S): NSF 15-548	
	National Science Foundation Directorate for Biological Sciences Division of Integrative Organismal Systems
Full Proposal Deadline(s): Proposals Accepted Anytime	



Plant Genome Research Program

- For genome...mically important plants
- Four
 - 1. F...pment
 - 2. TR...plant transformation
 - 3. MINE C...datasets
 - 4. ECA or MCA: Early Career or Mid-Career awards
- Continues as “No Deadline”

**Solicitation is currently
under revision!
Focus areas may change
Will remain “No Deadline”**



[Solicitation at NSF 16-614](#) and [FAQs at NSF 17-017](#)

Contact: dbipgr@nsf.gov



Other Funding Opportunities

- **Early Career Faculty:** CAREER program
- **Postdocs:** Postdoc Fellowships (NPGI PRFB)
- **Undergrads:** Research experience for students & institutions (REU)
- **Minority-serving institutions:** Tribal College (TCUP) and Historically Black Colleges & Universities (HBCU) programs
- **Grad students:** Graduate Traineeships (NRT) & Fellowships (GRFP)
- **Supplements** to active awards

Check out the PAPPG 18-1
for details



Find Your Research Fit



- Finding the right program is a collaborative process
- Keep up-to-date with NSF website and social media
- Sign up for [NSF alerts](#)
- Contact Program Directors for advice!



IOS in Focus

DEBrief

Blog of the Division of Environmental Biology, NSF





Contact Info

Molecular Cellular Biosciences (MCB)

Karen Cone

kccone@nsf.gov

Integrative Organismal Systems (IOS) Plant Genome Research Program (PGRP)

Anne Sylvester

asylvest@nsf.gov

Cliff Weil

cweil@nsf.gov